

WHAT IS THE LA GLOW GOLD INFUSION?

- The LA Glow Gold Infusion is an innovative dual treatment device providing micro-skin needling and mesotherapy. It offers the delivery of a bespoke combination of skincare to the client
- Introduces intra-dermal micro-injections via the screw thread technology, infusing a cocktail of chosen ingredients with a spraying effect into the skin
- It is a micro-channelling needling device made up of either 0.6mm or 1.0mm 24ct gold plated micro needles which are thinner than a human hair. This allowing a pain less application and delivery of the cocktail infusion
- A versatile treatment where you can treat areas such as the face, neck, hands, body and hair. Improving the skin quality and appearance



GOLD INFUSION DEVICE

- The Gold Infusion Device causes a 'wound' the skin to stimulate dermal regeneration whilst leaving epidermis intact
- The fine needle columns close within hours, meaning there is very little down-time or the associated risks of the ablative procedures used to achieve similar responses
- Very fine needles used to create thousands of micro-needle columns in the skin
- Stimulates wound-healing response leading to the natural regeneration and repair of the skin
- Has considerably less risks and downtime compared to ablative procedures which achieve similar results
- Essential to use a high quality, sterile device that guarantees quality, safety and efficacy assurance (CE Mark Certification)



GOLD INFUSION INDICATIONS

0.6mm - No topical anaesthetic required

- Photo-damage
- Ageing skin
- Fine lines & wrinkles
- Impaired skin texture and tone
- General rejuvenation
- Under eye treatment
- Pigmentation
- Open pores
- Oily skin - **Meso-Tox**
- Facial sweating - **Meso-Tox**
- Dehydrated Skin

1.0mm - Topical anaesthetic required
(intense treatment)

- Scarring (including acne scarring)
- Stretch marks
- Photo-damage
- Ageing skin
- Fine lines & wrinkles
- Impaired skin texture and tone
- Hair Loss

WOUND HEALING RESPONSE

3 KEY STAGES

Stage 1 Inflammation:

- Blood and tissue fluid flow to the area, displaying as erythema, warmth and swelling
- Growth factors, oxygen and nutrients flood the area to facilitate cell renewal and enhance fibroblast infiltration
- This force of activity generates down into the deeper layers of the skin, even from superficial epidermal wounding

Stage 2 Tissue Proliferation

- Active healing occurs. The damaged skin begins to 'knit' together and the production of new cells begins
- Fibroblasts produce elastin and collagen type I, type III and type IV (for improved hydration and elasticity and a healthy extra cellular matrix) as well as glycosaminoglycans (polysaccharides which attract water)
- The collagen formed will continue to wrap around the site of the wound for up to 6 weeks post injury

Stage 3 Tissue Remodelling

- The young Collagen Type III will be renewed to the stronger, more supportive Collagen Type I
- Results in skin tightening and enhanced skin construction improving the overall appearance

INGREDIENT FORMULATIONS, EFFICACY & RATIONALE

- The LA Glow Gold Infusion allows professionals to deliver active ingredients such as growth factors, stem cells, non-cross linked hyaluronic gels, vitamins, nano-peptides and PRP into the skin - during training we will be using NCT 135HA
- For medical professionals it also allows you to deliver toxin into the skin - (mesotox) Enabling you to address and treat fine lines around the peri-orbital region (eye area) delicately and effectively without causing discomfort which you may endure from injections
- Rejuvenates skin and regenerates cells at a deeper level resulting in radiant, glowing skin from enhancing skin structure and quality
- Clients should only experience mild redness post treatment, which subsides within an hour

MESOTHERAPY... What is it?

- **Mesotherapy** (from Greek Mesos, meaning "middle", and therapy from Greek therapeia, "to treat medically") is a non-surgical treatment that involves the topical application of active skin rejuvenating substances/serums (such as vitamins, enzymes, acids etc) to the mesodermal layer of the skin
- These are delivered via micro-injections or micro-punctures, promoting instant, deep absorption of active ingredients
- The technique was developed in France in the 1950s by the renowned practitioner Dr Michel Pistor. It was later recognised as a medical treatment by the French Academy of Medicine in 1987

FILGORA NCTF 135 HA

- **New Cellular Treatment Factor - 59 Actives PLUS HA**
- Is an anti-aging mesotherapy treatment for intense hydration of the skin containing hyaluronic acid and an additional 59 nutrients to nourish the skin and improve its elasticity
- The main component is hyaluronic acid, however, it also contains skin-nourishing ingredients such as amino acids, vitamins, and anti-oxidants. Together, they promote skin rejuvenation and protect the skin from free radicals
- It has a true CE mark for treatment use within the skin

NCTF 135 HA UNIQUE FORMULA

REBOOSTS FIBROBLAST ACTIVITY FOR A REVERSE AGING EFFECT

/ NCTF® 135 HA ACTIVE FORMULA



HYALURONIC ACID
+
59 SKIN REVITALIZING
INGREDIENTS*

Vitamins
Amino acids
Co-enzymes
Nucleic acids
Minerals

* Non-exhaustive list.

> CREATES AN OPTIMAL ENVIRONMENT FOR FIBROBLASTS

NCTF 135 HA

INGREDIENTS & PURPOSE

- Hyaluronic acid hydrates the skin from within, smoothing skin's texture and adding subtle volume.
- Vitamins A, B, C and E improve cell function
- Minerals protect the skin from deficiencies
- Amino acids stimulate collagen production
- Coenzymes increase tissue construction speed
- Nucleic acid bases stimulate cellular communication
- Anti-oxidants protect the skin from damaging effects of free radicals

KEY ROLE OF FIBROBLASTS

SKIN AGING THE KEY ROLE OF FIBROBLASTS

FIBROBLAST, A MAJOR CELL IN THE DERMIS⁽²⁾

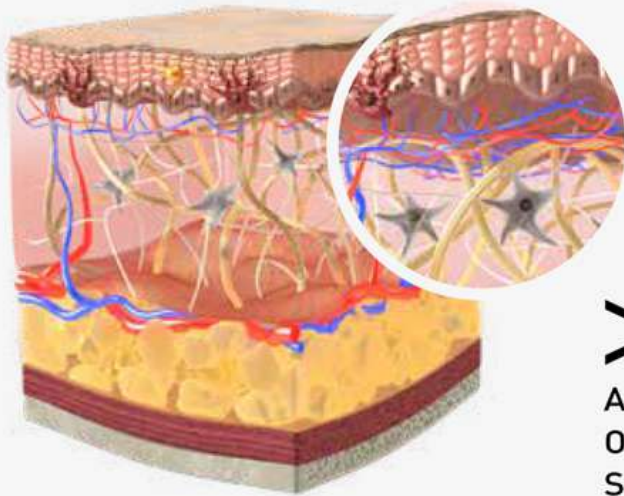
- Collagen production
- Elastin production
- Hyaluronic acid production
- Key role in maintaining youthful appearance of skin

BENEFITS OF NCTF 135 HA... IS IT FOR YOU?

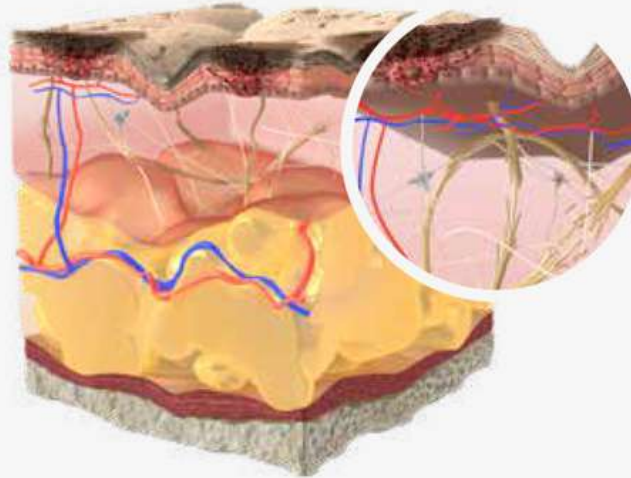
- Intense revitalization and hydration of the skin
- Flattening of superficial wrinkles and recovery of lost elasticity
- Enhances the complexion
- Improves dermal structure
- Can be used as a stand alone treatment
- Can be used at any age and by any skin type, to correct visible signs of aging
- Particularly suitable for women or men seeking a rested appearance, and healthy-looking skin

KEY ROLE OF FIBROBLASTS

YOUNG SKIN-HEALTHY
FIBROBLAST



MATURE SKIN-AGING
FIBROBLAST



>
AGING
OXIDATIVE
STRESS

Reduction of quality and quantity of collagen - elastin - hyaluronic acid

Imbalance between antioxidant protection and free radicals

> APPEARANCE OF 1ST SIGNS OF AGING

NCTF 135 HA PROTOCOL

- Using the LA Glow Gold Infusion and NCTF 135 we recommend x1 session can be carried out 4 weekly over a minimum of 3 sessions for best results.
- This treatment may be carried out on several areas such as:
 - Face
 - Neck
 - Décolletage
 - Hands
 - Inner thighs
 - Abdomen

MODE OF APPLICATION

MAXIMISE INGREDIENT PENETRATION

A three-step protocol comprising three sessions a fortnight apart + two sessions a month apart is recommended for optimal and lasting results.^[5]

/ PENETRATION DEVICES



SYRINGE



NEEDLE PEN



ROLLER



MESO GUN

/ MULTIPLE INJECTION TECHNIQUES



Point per point



Nappage



Retrotracing
across the wrinkle

SCIENTIFICALLY PROVEN RESULTS!

-59% PORE SIZE



SCIENTIFICALLY PROVEN RESULTS!

-43% DEPTH OF CROW'S FEET WRINKLES



SCIENTIFICALLY PROVEN RESULTS!

+49% SKIN RADIANCE



RRS XL HAIR

- For the treatment of alopecia, formulated to activate hair restoration by increasing production of human papilla cells
- Following an in vitro (test tube) study, XL Hair increased cells production by 23%. Featuring Fibroblast Growth Factors, terpenes, vitamins, flavonoids, organic silicium, amino acids and non-cross-linked HA
- The restructuring and moisturising capacity of Hyaluronic Acid provides the scalp with exceptional hydration and bio-stimulation
- XL Hair is one of the few successful non-surgical treatments for hair loss

CASE STUDY - RESULTS

Main indication: Androgenic alopecia
Products: XL Hair®, AD daily care Hair

Before



After



Main indication: Androgenic alopecia Products:
XL Hair®, AD Daily care Hair

Before



After



HAIR PRODUCTS

AD ScalpFit Shampoo

A shampoo suitable for scalp preparation before procedures like mesotherapy or a hair transplant. and contains antiseptic ingredients such as Chlorhexidine

Protocol

Apply shampoo on the scalp by generous massage, leave for 2 minutes, and rinse with plenty of water. Use the product between 2 and 4 hours before proceeding to treatment of scalp



AD Hair Growth Spray

A dermatologically tested shampoo indicated for men and women as preventive care of excessive hair fall or as a complement to hair loss treatments such as injectable treatments on the scalp or hair transplantation.

Protocol

Apply revitalix shampoo on wet hair and scalp, doing a gentle massage, rinse thoroughly. Repeat the action twice.



AD Revitalix Shampoo

A tropical solution indicated for men and women who suffer excessive hair loss. It works as preventive or maintenance care combined with professional treatment for hair restoration.

Protocol

Recommended application during 4 weeks at least, to strengthen growth.

Spray AD Daily Care Hair directly onto the scalp after washing it and lightly massage ensuring the product is well distributed over the application areas. Apply twice a day, as long as necessary.



WHY USE RRS?

- **Treatment Plan:**

XL hair medical device CE Mark class III (3 ml per vial, single use)

- **Injections:**

30G needle, 1.5-2 mm deep

- **Total Sessions:**

8 treatments

- **Frequency:**

Weekly over areas with hair loss

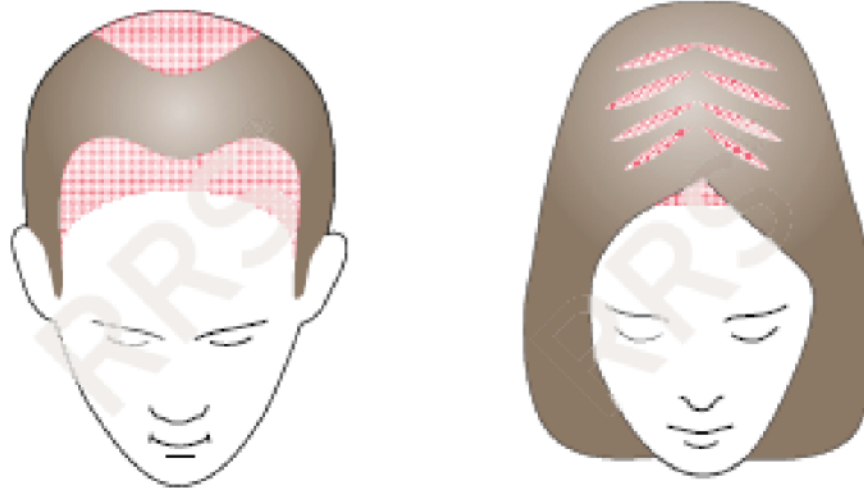
- **Spray AD Daily Hair Care:**

Twice a day 3 times a week for 24 weeks

Shampoo Scalpfit

Shampoo Revitalix

MESO TREATMENT OF SCALP



SAFETY

PRE-MARKET STUDIES

POST-MARKET STUDIES

RRS line + XLHAIR

SAFETY CONCERN

Cohort study : 112 patients

SIDE EFFECTS EVALUATION

Ecchymoses

Oedema

Itching

Redness

Irritation, inflammation

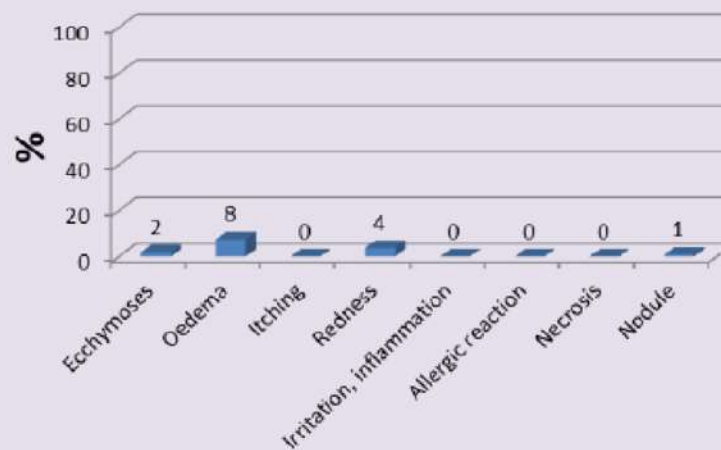
Allergic reaction

Necrosis

Nodule

Requirement for treatment

SIDE EFFECTS RELATED TO THE PRODUCT



No patient required treatment for the side effect.

TREATMENT EFFICIENCY

PRE-MARKET STUDIES

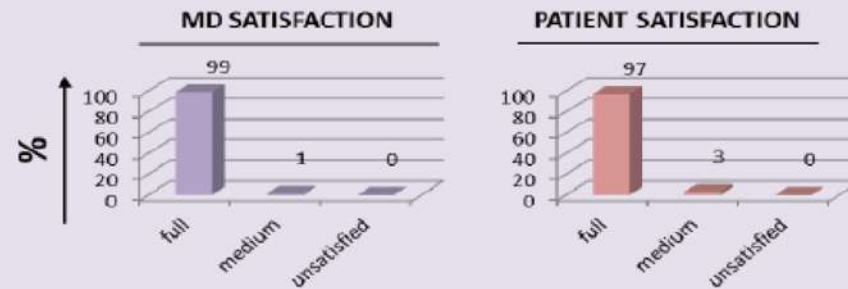
POST-MARKET STUDIES

RRS line + XLHAIR

TREATMENT EFFICIENCY

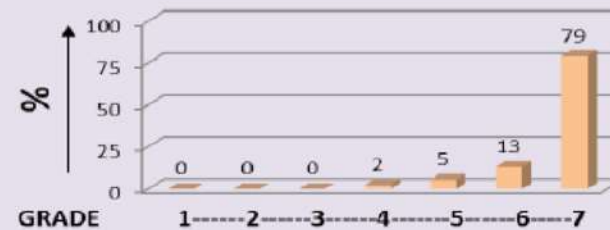
Cohort study : 112 patients

MD & PATIENT SATISFACTION



MD: EFFICIENCY GRADING

1-----2-----3-----4-----5-----6-----7
Bad Medium Excellent



CAUTIONS

- Autoimmune disorders (e.g. diabetes, thyroid etc)
- Blood thinning medications
- Eczema, Dermatitis or Psoriasis
- Breakouts
- Raised lesions on the skin (papules, seborrheic keratosis, cherry angioma, skin tags, milia etc)
- Semi-permanent make-up
- Skin sensitivity - stop active retinol/strong exfoliating agents, e.g. AHAs etc 2 weeks prior
- Sun exposure
- Skin conditions - e.g. pigmentation
- Assess recent skin treatments within the last 2 weeks i.e. cosmetic treatments, waxing , laser hair removal, electrolysis

If any clients conditions are unstable or you are unsure what a condition is, then don't treat and seek further advice.

CONTRAINDICATIONS

- Allergy to ingredients + An allergy to nickel - stainless steel + gold plated titanium
- Pregnancy - (client can have relaxing facial/ dermaplaning facial only after 12 weeks) **NOT GOLD INFUSION**
- Skin Cancer
- Chemotherapy and Radiotherapy
- Autoimmune disorders - Hepatitis, HIV - (if client are unstable)
- Active skin disorders - Dermatitis, Eczema, Psoriasis
- Haemophilia - blood clotting disorder
- Roaccutane within last 6 months
- Skin sensitising medications ie. Steroids, Antibiotics, Tetracycline, Benzoyl peroxide
- Telangiectasia - Broken Capillaries
- Cold sores (herpes simplex virus)
- Open wounds on treatment site
- Active acne - **avoid dermaplaning** - Client can only have (relaxing facial & LED light therapy)
- Excessively oily skin - **avoid dermaplaning** - Gold Infusion Mesotox can be used & facials

CONTRAINDICATIONS

VITAMIN A / RETINOIDS & DERIVATIVES BOTH ORAL & TOPICAL

- Retinol/Vitamin A within the last 1-2 weeks
- Roaccutane within the last 6-12 months - look out for other forms/names:
 - Accutane
 - Tretinoin
 - Isotretinoin
 - Differin

If uncertain about medications, try to identify whether they cause photosensitivity or ask client to check with GP. If in doubt, DO NOT TREAT

ANY SIDE EFFECTS?

Side effects are generally short lived but can include:

- Sensitivity
- Redness
- Dryness
- Skin purge (potential breakouts/pigmentation)
- Skin more vulnerable to UV and free radicals (SPF vital!)
- Aftercare - provide products to prevent trans - epidermal water loss reactions post treatment -

LA GLOW GOLD INFUSION AFTERCARE

- Avoid extreme heats, chlorine and vigorous physical activity immediately after treatment or until all redness has subsided
- Avoid direct sun exposure for at least 48 hours
- Cleanse twice daily with a gentle cleanser, followed by a hydrating serum/hydra-boost. (no soap, face wipes, AHAs) LA Glow Gentle Wash
- SPF 30+ **MUST** be applied daily to the treated area for a minimum of two weeks (and is recommended daily thereafter) LA Glow Protect
- Do not apply makeup for 24-48 hours (Minerals can be used after 24) and ensure makeup brushes are hygienically clean before makeup application
- Stop using exfoliants until at least one week after treatment
- Tanning beds should never be used